

- All metal multidirectional anti-vibration/shock mounts
- Exceptional reliability and long life
- High damping
- No aging
- Corrosion resistant
- Unequaled temperature range: - 180°C to 300°C (- 290°F to 570°F)
- Great adaptability/versatility

Dimensions are in inches. For reference only

SERIES
Materials and finishes (meets RoHS requirements)
MP56
Cable: stainless steel
Retainer bars: aluminium alloy
Inserts: stainless steel

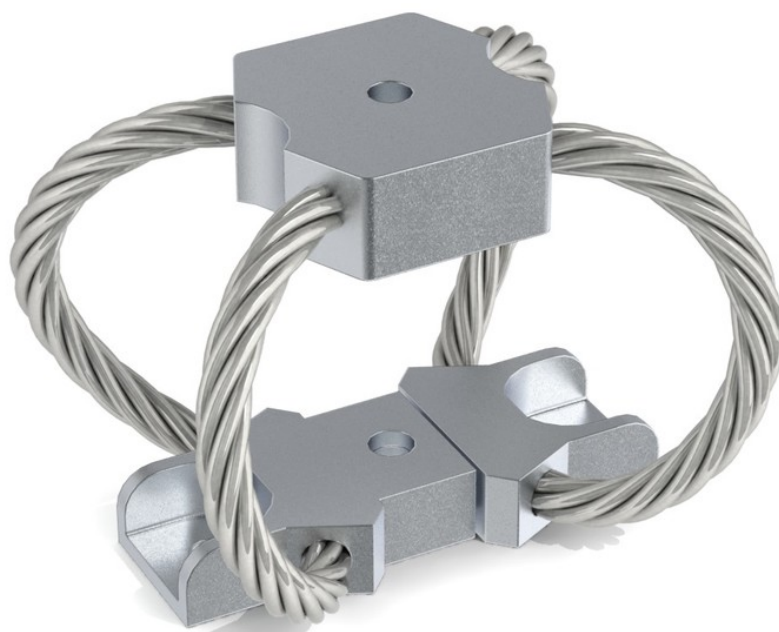
MODEL	height h (in)	width u (in)	width v (in)	weight (lbs)
-62	3.0	3.7	4.5	1.3
-68	3.3	3.8	4.8	1.5
-72	3.6	4.2	5.2	1.7
-74	4.1	4.3	5.5	1.8
-82	5.0	5.0	6.0	2.2
-88	6.1	5.9	6.8	2.3

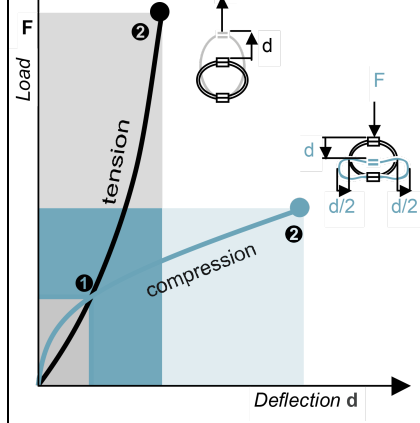
INTERFACES	
fixtures holes D	
no suffix	1 through hole \varnothing 0.35 in (optional 1/2 - 13 insert)
	2 through holes \varnothing 0.35 in

M P 5 6 - 6 2

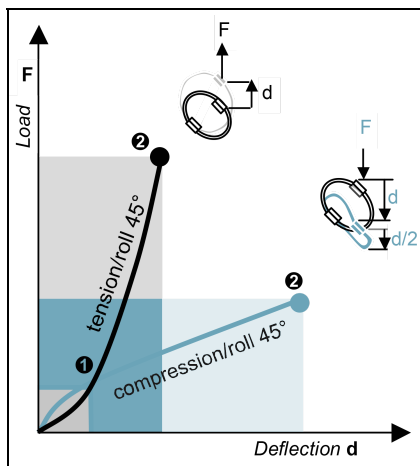
SERIE: MP56
'Polycal' mount from the
MP56 series

MODEL: -62
height: 3.0in
width: 3.7in
weight: 1.3lbs

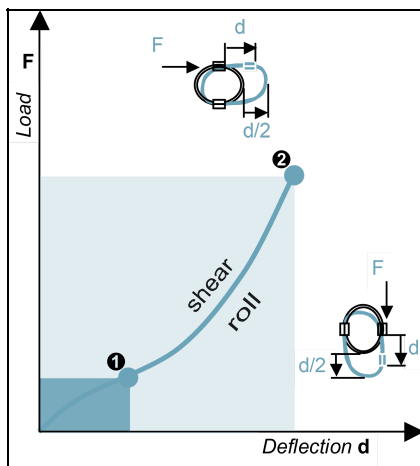




MP56 Series	Model	-62	-68	-72	-74	-82	-88
1. Max Static	F lbf	230	200	170	140	110	76
	d in	0.17	0.23	0.29	0.38	0.59	0.77
2. Max Shock	F lbf	700	610	510	430	330	230
	d in	1.2	1.5	1.7	2.1	3.0	3.9
3. Max Vibration	2a in	0.13	0.16	0.19	0.23	0.33	0.43
	f Hz	7.4	6.6	6.0	5.4	4.3	3.7
1. Max Static	F lbf	230	200	170	140	110	76
	d in	0.17	0.23	0.29	0.34	0.41	0.55
2. Max Shock	F lbf	3000	2400	2000	1600	1100	760
	d in	1.1	1.2	1.5	1.6	1.8	2.4
3. Max Vibration	2a in	0.12	0.14	0.16	0.18	0.20	0.26
	f Hz	8.5	8.0	7.5	6.9	6.3	5.5



MP56 Series		Model	-62	-68	-72	-74	-82	-88
1. Max Static	F lbf	180	150	130	110	83	57	
	d in	0.26	0.34	0.42	0.54	0.84	1.2	
2. Max Shock	F lbf	450	390	320	270	200	140	
	d in	1.8	2.2	2.6	3.2	4.5	5.9	
3. Max Vibration	2a in	0.20	0.24	0.28	0.35	0.49	0.65	
	f Hz	6.3	5.6	5.1	4.6	3.6	3.2	
1. Max Static	F lbf	180	150	130	110	83	57	
	d in	0.26	0.34	0.42	0.52	0.64	0.85	
2. Max Shock	F lbf	1500	1200	1000	800	530	370	
	d in	1.3	1.4	1.7	1.9	2.0	2.7	
3. Max Vibration	2a in	0.14	0.16	0.18	0.21	0.22	0.30	
	f Hz	7.7	7.3	6.7	6.3	5.7	5.0	



MP56 Series		Model	-62	-68	-72	-74	-82	-88
1. Max Static	F lbf	120	100	85	71	55	38	
	d in	0.36	0.47	0.57	0.73	1.1	1.6	
2. Max Shock	F lbf	750	590	490	390	250	170	
	d in	1.4	1.6	1.9	2.2	2.8	3.6	
3. Max Vibration	2a in	0.15	0.18	0.21	0.24	0.30	0.40	
	f Hz	6.7	6.2	5.7	5.2	4.6	4.1	

1. Max static load (F) with corresponding deflection (d)
 2. Max shock load (F) with corresponding deflection (d)
 3. Uncoupled resonant frequency (f) under max static loading 1. and max peak to peak sinusoidal vibration input (2a)

***IMPORTANT:** Performance characteristics are given here for reference only. They can be increased under specific conditions. Contact us

TYPICAL SHOCK/VIBRATION SPECIFICATIONS:

- Air: AIR 7306, MIL-E-5400, MIL-C-172, MIL-STD-810
- Ground Forces: GAM EG13A, SEFT 001, MIL-STD-810, VG 9533
- Marine: GAM EG13C, IT25-21/96-31/15-86, MIL-S-167, MIL-S-901, STANAG 042, BV 043.73, BV 044
- Others: GAM EMB1, GAM EMBT4, DEF STAN 07-55, IEC 571, FINABEL 2C